

A Accessories

Common Accessories

Contact Blocks and LED Blocks for Ø16 Control Switches

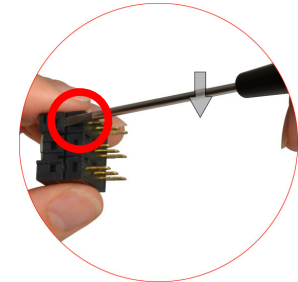
Ordering Information




SA	16	CB	W	
Item	Applied switches	Type	LED color ^{※1}	LED block
				CB ^{※2}
				R Red
				B Blue
				G Green
				Y Yellow
				W White
		CB ^{※2}	Contact block	B contact (normally closed)
		CC	Contact block	C contact (normally open, normally closed)
		L5	LED block	5VDC
		L12	LED block	12VDC
		L24	LED block	24VDC
		16		For Ø16 control switches
		SA		Switch Accessories

※1. Only for LED blocks.

※2. Only for Ø16 emergency switches.

- **Contact block and LED block removal**
Separate the unit using a flat-head (-) screwdriver.



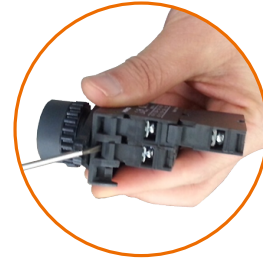
Item	Appearance	Model	Type	Features
Contact block		SA16-CB	B contact (normally closed)	For Ø16 emergency switches
		SA16-CC	C contact (normally open, normally closed)	—
LED block		SA16-L5□ (5VDC) SA16-L12□ (12VDC) SA16-L24□ (24VDC)	DC voltage type	Diverse, vibrant, high luminance LEDs (red, blue, green, yellow, white)

■ Contact Blocks and LED Blocks for Ø22/25, Ø30, □30 Control Switches

○ Ordering Information

SA	—	CA	M	
				Item
				Applied switches
				Type
				Contact block type
				LED color ^{※1}
				LED block
				CA
				CB
				LD
				LA
				No-mark
				SA
				For Ø22/25, Ø30, □30 control switches
				Switch Accessories

• **Contact block and LED block removal**
Separate the unit using a flat-head (-) screwdriver.



※1. Only for LED blocks.

※Multi-unit connection is only available for modular type (SA-□M).

Item	Appearance	Model	Type	Features
Modular type contact block		SA-CAM	A contact (normally open)	Ring or spade terminals / Multi-connection (up to 3 units)
		SA-CBM	B contact (normally closed)	
Singular type contact block		SA-CA	A contact (normally open)	Spade terminals only / Loose screw prevention
		SA-CB	B contact (normally closed)	
Modular type LED block		SA-LD□M	AC/DC voltage type 12-24VAC 50/60Hz 12-24VDC	Diverse, vibrant, high luminance LEDs (Red, Blue, Green, Yellow, White)
		SA-LA□M	AC voltage type 110-220VAC 50/60Hz	
Singular type LED block		SA-LD□	AC/DC voltage type 12-24VAC 50/60Hz 12-24VDC	
		SA-LA□	AC voltage type 110-220VAC 50/60Hz	

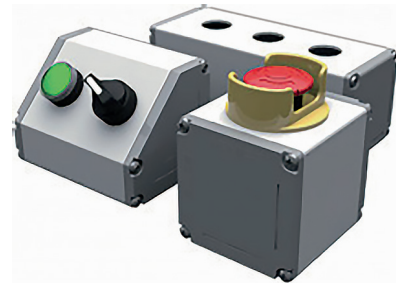
- Control Switches
 - Ø16
 - Ø22/25
 - Ø30
 - 30
- Push Button Switches
 - Round
 - Square
 - Rectangular
- Selector Switches
 - Round
 - Square
 - Rectangular
- Key Selector Switches
 - Round
 - Square
 - Rectangular
- Double Push Button Switches
- Mushroom-head Push Button Switches
- Emergency Switches
- Pilot Lights
- Accessories
- Buzzers

A Accessories

Switch Enclosures for Ø22/25 Control Switches

Ordering Information

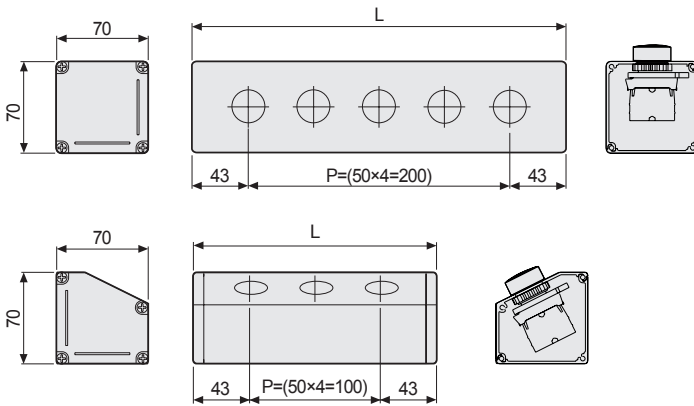
SA	SB	3	
Item	Applied switch	Appearance	Holes
			1
			2
			3
			4
Item	Applied switch	Appearance	SB
			TB
Item	Applied switch	Appearance	No-mark
			SA



※You can order the other size and the number of holes.

• Hole size: Ø22.5/25.5mm

(unit: mm)



Holes	L
1	86mm
2	136mm
3	186mm
4	236mm
5	286mm

Locking Handle for Switches

Applied switches	Appearance	Model	Note
Ø16		SA16-LH	For locking switch nuts behind the panels
Ø22/25, Ø30 ^{※1} , □30		SA-LH	

※1. Except Ø30 round pressure switches (extended).

Accessories By Item

(unit: mm)

Item	Appearance	Model	Dimensions	Note						
Emergency switch nameplates		SA-NS	Size : D60×d25	Standard and illuminated nameplates are available for emergency switches. ※ Illuminated nameplates are optional. ※ D60 emergency switches (S2ER-E5R□) are not compatible with SA-NS nameplates						
		SA-NL	Size : D80×d25							
Protective shrouds for emergency switches		SA-EG1		Protective shrouds to prevent accidental/incorrect operation <table border="1"> <tr> <th>D</th> <th></th> </tr> <tr> <td>SA-EG2</td> <td>Ø22.5</td> </tr> <tr> <td>SA-EG3</td> <td>Ø25.5</td> </tr> </table> ※Not available for D60 emergency switches (S2ER-E5R□).	D		SA-EG2	Ø22.5	SA-EG3	Ø25.5
	D									
SA-EG2	Ø22.5									
SA-EG3	Ø25.5									
		SA-EG2/ SA-EG3								
Waterproof cap for Ø22/25 round push button switches		SA-WP (non-illuminated/ extended)		IP65 protection structure with waterproof cap						
		SA-WL (illuminated/ extended)								
Lens remover for Ø16 push button control switches or pilot lights		SA16-RM		Lens remover for push button control switches or pilot lights						

- Control Switches
 - Ø16
 - Ø22/25
 - Ø30
 - 30
- Push Button Switches
 - Round
 - Square
 - Rectangular
- Selector Switches
 - Round
 - Square
 - Rectangular
- Key Selector Switches
 - Round
 - Square
 - Rectangular
- Double Push Button Switches
- Mushroom-head Push Button Switches
- Emergency Switches
- Pilot Lights
- Accessories
- Buzzers